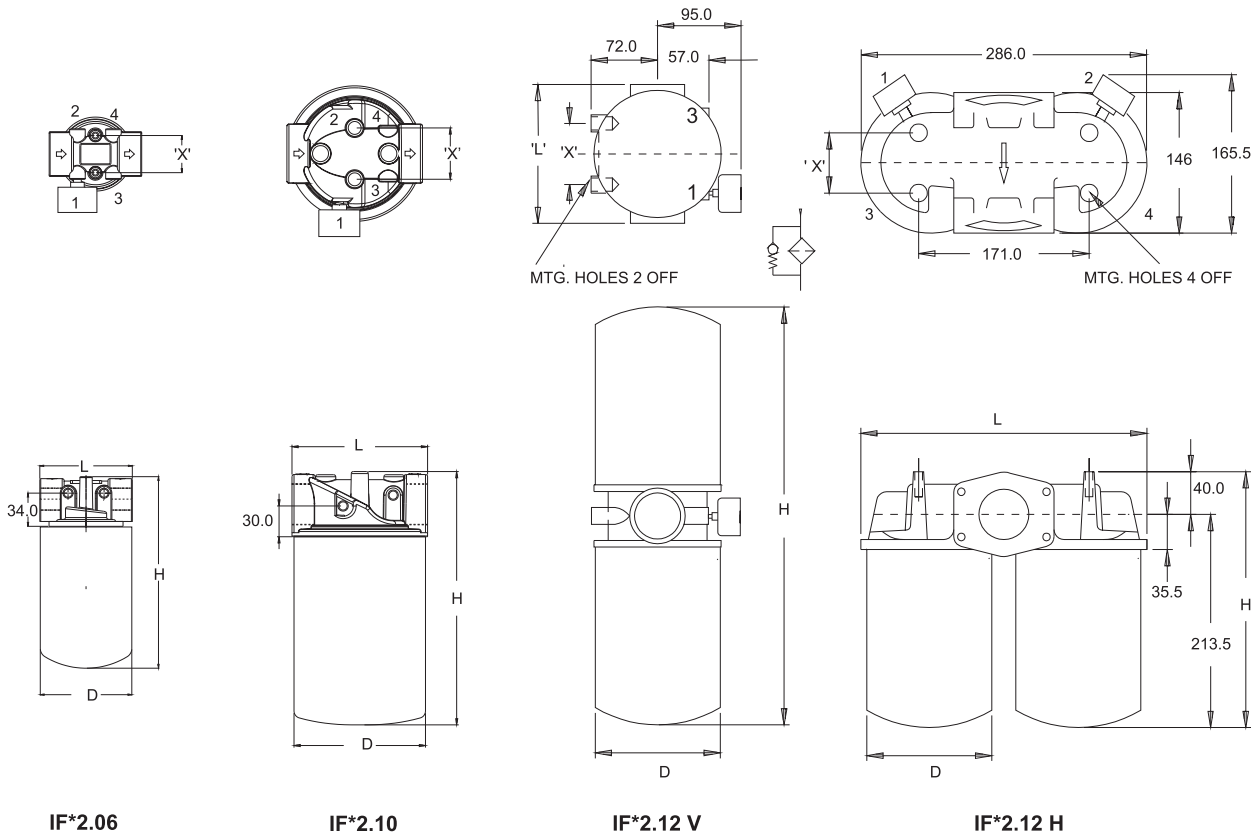


# FILTER - INLINE SPIN ON

- DISPOSABLE SPIN ON
- DIE CAST ALUMINIUM HEAD
- 3 SIZES FLOWS TO 300 LPM
- MAX. PRESSURE 10 BAR / TEST 15 BAR / BURST 20 BAR
- BY PASS STANDARD 1 BAR ( SUCTION 0.2 BAR )
- MAX. TEMP. 80 ° C.
- FOR USE WITH MINERAL / PETROLEUM BASED OILS

IFR2

IN LINE FILTER



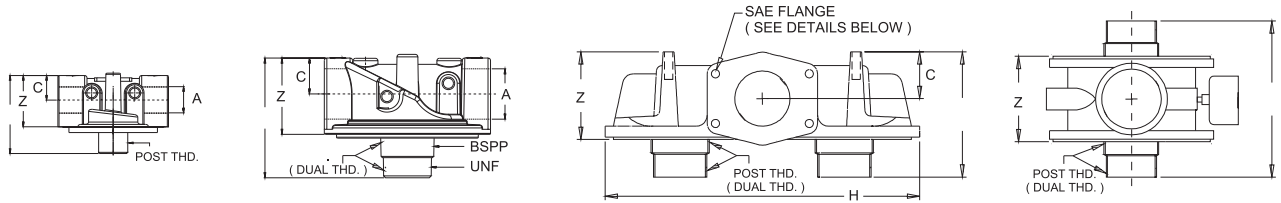
MODEL CODE	L	D	H	X	MOUNTING HOLES		GAUGE PORT		WT
					NOS	SIZE	NOS	NPT	KGS
IF * 2 . 06 . 20	95	95	196	38	2 OFF	M 6 X 1.0	2 OFF	1 / 8"	1.0
IF * 2 . 10 . 50	132	129	247	50	2 OFF	M 8 X 1.25	2 OFF	1 / 8"	2.3
IF * 2 . 12 V . 80	148	129	426	65	2 OFF	M 10 X 1.5	2 OFF	1 / 8"	3.4
IF * 2 . 12 H . 80	286	129	251	60	4 OFF	M 10 X 1.5	2 OFF	1 / 8"	5.0

DIMENSIONS IN MM FOR REFERENCE ONLY

# FILTER - INLINE SPIN ON



## HEAD CASTING



DUAL THREAD ( 1 1/4 BSPP 1 1/2 16 UNF )

IF\*2.06

IF\*2.10

IF\*2- 12 H

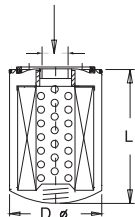
IF\*2-12 V

MODEL	PORT THD.	PORT	POST THD.	C	K	Z	H	WT KGS
IF* 2 . 06	3 / 4"	BSPP	3 / 4"	BSPP	22	67	45	0.3
IF* 2 . 06 U	3 / 4"	BSPP	1" UNF X 12					
IF* 2 . 10	1 1 / 4"	BSPP	DUAL THD	29	100	61		1.1
IF* 2 . 12 V	1 1 / 2"	BSPP	DUAL THD		140	70		1.0
IF* 2 . 12 H	1 1 / 2"	BSPP	DUAL THD					
IF* 2 . 12 HSF1	1 1 / 2"	SAE FLANGE	DUAL THD	50	122	91	286	2.5
IF* 2 . 12 HSF2	2"	SAE FLANGE	DUAL THD					

## ELEMENT

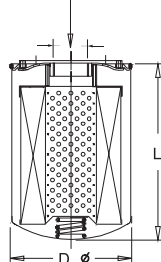
B 3/4" BSP

U 1" UNF X 12 T.P.I.

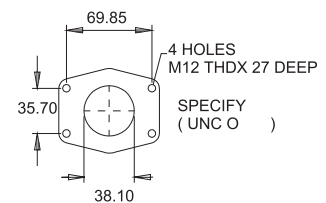


SE - 20 - \* - \*

1 1/4" BSPP



IFE - 50 - \* - \*



SAE FLANGE DETAILS

CARTRIDGE	D	L	FILTRATION AREA CM	WT KGS
SE - 20 - * - *	96	146	2100	0.7
IFE - 50 - * - *	129	180	5600	1.2

DIMENSIONS IN MM FOR REFERENCE ONLY

# FILTER - INLINE SPIN ON



## MODEL CODE ASSEMBLY

IF R 2	- 10		- 50	- 10		- *
SERIES	PORT SIZE	PORT CONNECTION	SIZE ELEMENT	FILTRATION MICRONS	POST THREAD	P ASS SPECIAL
- NO BYPASS	06 - 3/4"	- BSPP (STD)	20	10 - 10 NOM	- 3/4 BSPP U - 1 UNF	R3 15 S R4 25 S1 3 S S2 5 (OMIT IF STD)
R - RETURN	10 - 1 1/4"	N - NPT	50	25 - 25 NOM	DUAL THREAD	
S - SUCTION	12V - 1 1/2" 12H - 1 1/2"	S - SAE SF* - SAE FLANGE (ONLY FOR 12 H)	80	A10 - 10 ABS A25 - 25 ABS		

## INDICATOR OPTIONAL ( TO BE ORDERED SEPERATELY )

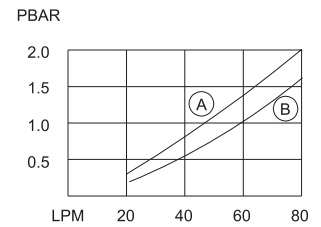
I	R 2	1/8 NPT
S	S 2	1/8 NPT
	B 4	1/8 NPT

## MODEL CODE HEAD CASTING

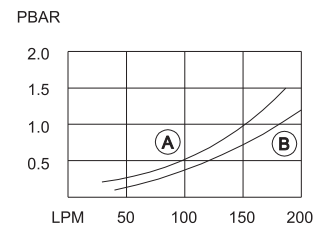
IF R 2	- 10		-	- *
SERIES	PORT SIZE	PORT CONNECTION	POST THREAD	P ASS SPECIAL
- NO BYPASS	06 - 3/4"	- BSPP (STD)	- 3/4 BSPP U - 1 UNF	R3 15 S R4 25 S1 3 S S2 5 (OMIT IF STD)
R - RETURN	10 - 1 1/4"	N - NPT	DUAL THREAD	
S - SUCTION	12V - 1 1/2" 12H - 1 1/2"	S - SAE SF* - SAE FLANGE (ONLY FOR 12 H)		

OIL ISCO CITY 32 S 30° C

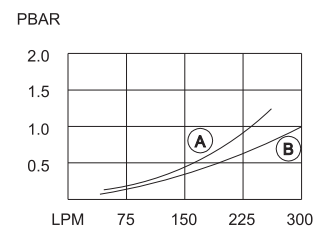
Ⓐ 10 MICRONS Ⓑ 25 MICRONS



IFR2 - 06



IFR2 - 10



IFR2 - 12

## MODEL CODE ELEMENT

***	- 50	- 10	
SERIES	SIZE	FILTRATION MICRONS	POST THREAD
SE	20	10 - 10 NOM 25 - 25 NOM	- 3/4 BSPP U - 1 12 UNF
IFE	50	A10 - 10 ABS A25 - 25 ABS	- 1 1/4 BSPP

OPTIONAL / SPECIAL FEATURE OMIT IF NOT REQUIRED  
CONSULT FACTORY FOR OPTIONAL / SPECIAL FEATURE

# FILTER - INLINE SPIN ON

