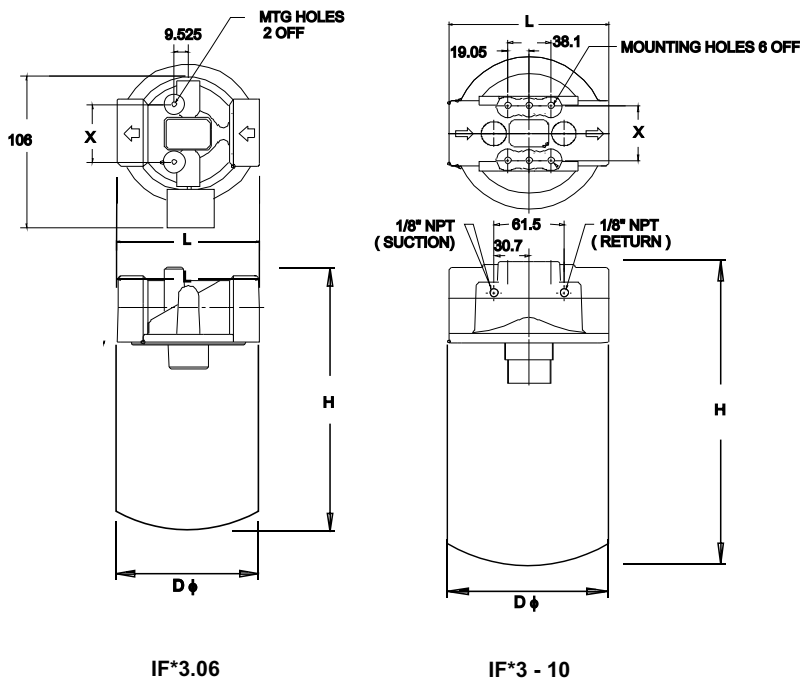


FILTER - INLINE SPIN ON - IF *3 SERIES



- DISPOSABLE SPIN ON ELEMENT
- DIE CAST ALUMINIUM HEAD
- FLOWS TO 150 LPM
- MAX. PRESSURE 10 BAR / TEST 15 BAR / BURST 20 BAR
- MAX. TEMP. 80 ° C.
- FOR USE WITH MINERAL / PETROLEUM BASED OILS

IFR3 / IFR4

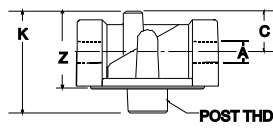


MODEL CODE	L	D	H	X	MOUNTING HOLES		GAUGE PORT		WT
					NOS	SIZE	NOS	NPT	KGS
IF *3.06 *	95	96	188	38.1	2 OFF	1/4" UNC X 20 M6 X 1.0	2 OFF	1/8"	1.7
IF *3.10*	140	129	250	47.6	6 OFF	5/16" UNC X 18 M 8 X 1.25	2 OFF	1/8"	5

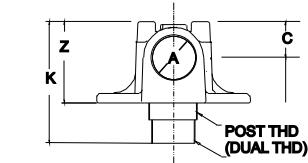
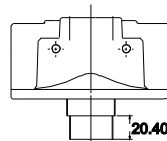
* :- Refer Model Code Assembly

DIMENSIONS IN MM FOR REFERENCE ONLY

FILTER - INLINE SPIN ON



IF*3.06



IF*3 - 10

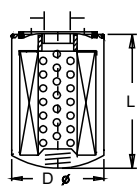
DUAL THREAD (1-1/4 BSPP & 1-1/2 UN)

MODEL	PORT THD. 'A'	POST THD	C	K	Z	WT KGS
IF* 3 . 04 / 8S	Refer Model Code Assembly	1" - 12 UN	28	68	50	0.5
IF* 3 . 06 / 12S		3/4" - BSPP				
IF* 3 . 08 / 16S		1-1/4" BSPP & 1-1/2"-16 UN				
IF* 3 . 10 / 20S	Refer Model Code Assembly	1-1/4" BSPP & 1-1/2"-16 UN	32	106	70	1.1

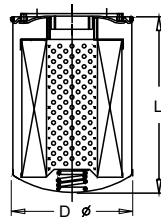
ELEMENT

B - 3/4" BSP
OR
U - 1" UNF X 12 T.P.I.

1 - 1/4" BSPP



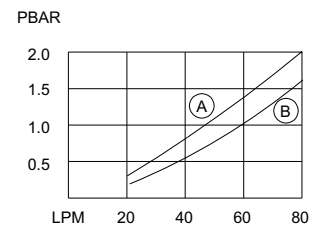
S/E - 20 - ** - *



IFE - 50 - ** - B

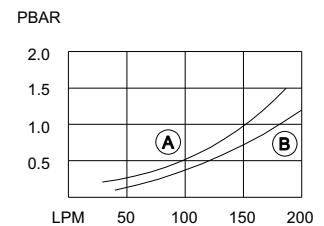
OIL VISCOCITY 32 cSt @ 30° C

Ⓐ - 10 MICRONS Ⓑ - 25 MICRONS



IFR3 - 06

CARTRIDGE	D	L	FILTRATION AREA CM ²	WT KGS
S/E - 20 - ** - *	96	146	2100	0.7
IFE - 50 - ** - *	129	180	5600	1.2



IFR3 - 10

DIMENSIONS IN MM FOR REFERENCE ONLY

FILTER - INLINE SPIN ON



MODEL CODE : ASSEMBLY

IF R 3	- 10	B	- 50	- 10	B	- *
SERIES	PORT SIZE	PORT CONNECTION	ELEM SIZE	FILTRATION MICRONS	POST THREAD	BYPASS SPECIAL #
R - Return	04 - 1/2"	N - NPT S - SAE	20 - gpm	10 - 10 NOM	U - 1" -12UNF (STD) B - 3/4" -BSPP	R3 - 15 psi Std R4 - 25 psi S1 - 3 psi Std S2 - 5 psi
S - Suction	06 - 3/4"					
	08 - 1"					
	8S - 3/4" - 16U					
	12S - 1-1/16" - 12U					
B - Blocked (No ByPass)	16S - 1-5/16" - 12U			25 - 25 NOM		
	10 - 1-1/4"	NF - NPTF	50 - gpm		DUAL THREAD 1-1/4" - BSPP & 1-1/2" - 16 UNF	
	20S - 1-5/8" - 12U	S - SAE				

MODEL CODE : HEAD CASTING

IF R 3	- 10	B	B	- *
SERIES	PORT SIZE	PORT CONNECTION	POST THREAD	BYPASS SPECIAL #
R - Return	04 - 1/2" 06 - 3/4" 08 - 1" 8S - 3/4" - 16U 12S - 1-1/16" - 12U 16S - 1-5/16" - 12U	N - NPT S - SAE	U - 1" -12UNF (STD) B - 3/4" -BSPP	R3 - 15 psi Std R4 - 25 psi S1 - 3 psi Std S2 - 5 psi
S - Suction				
B - Blocked (No ByPass)				
	10 - 1-1/4"	NF - NPTF	DUAL THREAD 1-1/4" - BSPP & 1-1/2" - 16 UNF	
	20S - 1-5/8" - 12U	S - SAE		

MODEL CODE : ELEMENT

***	- 50	- 10	B
SERIES	SIZE	FILTRATION MICRONS	POST THREAD
S/E	20	10 - 10 NOM	U - 1" - 12 UNF (STD) B - 3/4" - BSPP
IFE	50	25 - 25 NOM	B - 1-1/4" - BSPP (STD)

INDICATOR : OPTIONAL (TO BE ORDERED SEPERATELY)

Indicator ports: R - 2 off x 1/8" NPT inlet
Standard S - 2 off x 1/8" NPT outlet
B - 4 off x 1/8" NPT inlet & outlet

OPTIONAL / SPECIAL FEATURE - OMIT IF NOT REQUIRED
CONSULT FACTORY FOR ** = 75 (ABSOLUTE) RATED ELEMENTS AVAILABILITY